

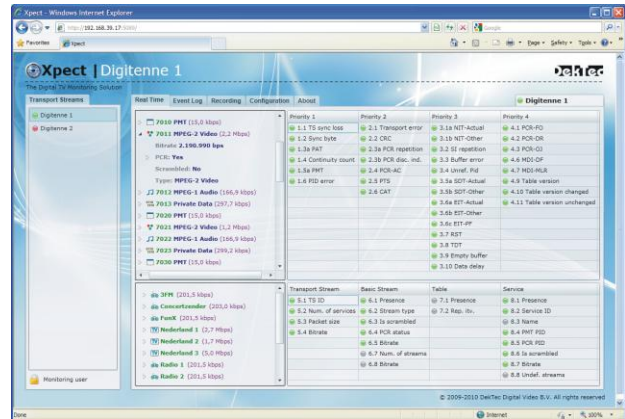


24/7 Transport-Stream Monitoring Software

- ❑ Full TR 101 290 priority 1, 2 & 3 tests
- ❑ User-defined template matching
- ❑ Long-term logging of stream statistics

FEATURES

- Simultaneous monitoring of multiple Transport Streams
- TR 101 290 conformance testing:
 - Priority 1, 2 & 3 (with buffer analysis)
 - PCR AC, FO, DR and OJ
 - MGB bitrate measurement
- Template matching: checks properties of TS, services, service components and tables
- Capturing of monitored Transport Stream to a file with pre- and post-trigger buffers; client-initiated or triggered by a violation
- Maintains detailed statistical information:
 - Minimum/maximum/average bitrate
 - PCR statistics: AC, FO, DR and OJ
 - Delay Factor and Packet Loss (MDI)
- Log database stores events (positive and negative) for each monitored stream
- UDP notifications per logged event
- SOAP and SNMP interfaces for remote control and automated access to captured TS files, statistics and event database
- Web interface for overall status indication, remote configuration and access to event log and statistics information



- Easy integration with 3rd-party NMS
- Includes configuration tool for easy creation of TR 101 290 and template matching profiles
- Forwarding of any monitored Transport Stream over IP for remote real-time analysis or viewing (if using DTA-160)

APPLICATIONS

- 24/7 network supervision
- Automated equipment test and validation
- QoS maintenance: early visibility of faults
- SLA monitoring

SUPPORTED INPUT ADAPTERS

Signal Type	Supported Adapters
DVB-ASI	DTA-145, DTA-160, DTA-2144, DTA-2145
DVB-S/S2	DTA-2137
DVB-T	DTA-2135
TSoIP	DTA-160

RELATED PRODUCTS

Type	Description
DTC-320	<i>StreamXpert</i> Transport Stream analyser for interactive usage

KEY ATTRIBUTES

Parameter	Value
Max. #TS @ rate for simultaneous monitoring*	4 MPTS @ 75Mbps 8 MPTS @ 30Mbps 40 SPTS @ 6Mbps
Platform	Win XP/2k3/Vista/2k8

* Requires Core Duo @ 2GHz, 3GB RAM

ORDERING INFORMATION

Type	Description
DTC-720-nPT	<i>Xpect</i> monitoring, <i>n</i> points Each SPTS requires 1 point; each MPTS requires 4 points