

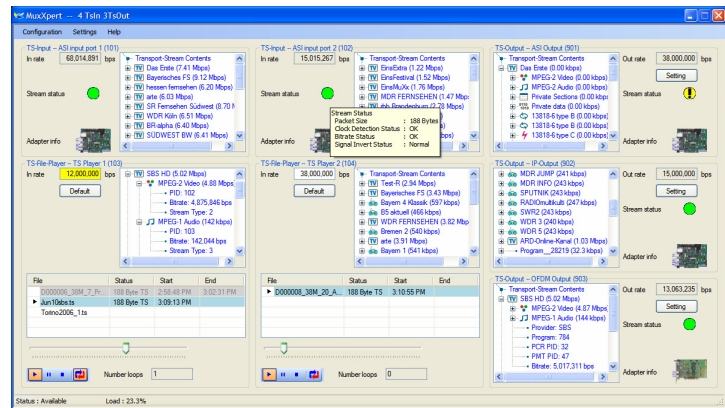


## Real-Time Multiplexer

- Real-time MPEG-2 (Re-)Multiplexing
- PSI and DVB-SI Generation and Insertion
- Integrated File Players

### FEATURES

- Real-time multiplexing and re-multiplexing of live Transport Streams
- Two integrated file players for the insertion of local content from disk into live streams
- Allows re-multiplexing of services and service components from any input to any output
- Automatic PSI and DVB-SI extraction, re-generation and insertion
- Runs on a standard- or industrial PC with all DekTec input and output adapters
- Flexible configuration allows adaptation of PIDs, services, tables, descriptors, etc.
- User interface provides information about services, components and bitrates in the input and output Transport Streams



### APPLICATIONS

- Master and Head-End (re-)multiplexing
- Local program insertion
- Generating Transport-Stream bouquets
- Creation of fully customized Transport Streams from files and live feeds

### KEY ATTRIBUTES

Parameter	Value
Number of TS Inputs	0, 1...4 or 1...8*
Number of TS Outputs	1...4
Number of File Players	1...4
Sum of Input Rates	0...300 Mbit/s**
Sum of Output Rates	0...300 Mbit/s**

\* Max. 8 without file players; 4 when one or two file players are used; 0 when three or four file players are used

\*\* Valid for PCs that meet the recommended PC requirements

### PC REQUIREMENTS

Platform	Windows-XP / 2003 with .NET v2.0
Processor	P4@3.0 Ghz* (recommended)
RAM	1 GB (recommended)

\* Or equivalent AMD processor

### SUPPORTED DEKTEC I/O ADAPTERS

Bus	Types
PCI	DTA-100, DTA-102, DTA-105, DTA-107, DTA-110, DTA-115, DTA-120, DTA-122, DTA-124, DTA-140, DTA-145, DTA-160
PCI Express	DTA-2145

### ORDERING INFORMATION

Type	Description
DTC-700	MuxXpert MPEG-2 Multiplexer

Please refer to [www.dektec.com](http://www.dektec.com) for the latest pricing and a list of distributors and resellers