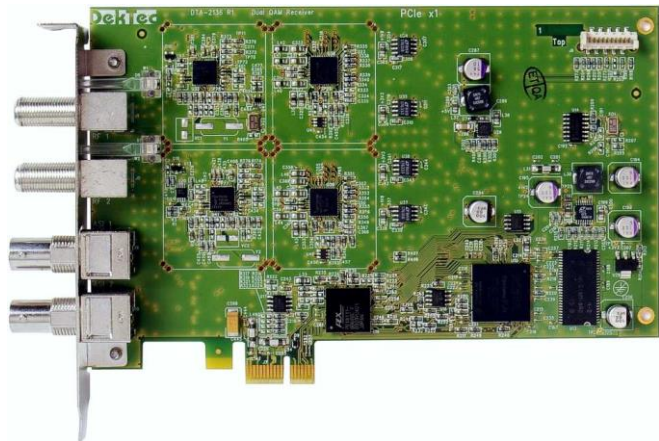


# Dual QAM-A/B/C Receiver for PCI Express

- Professional-grade digital cable receiver
- Extended frequency coverage to 1GHz
- DVB-ASI monitoring on each channel

## FEATURES

- Dual-channel QAM receiver, compliant with J.83 Annex A (DVB-C), B and C
- Applications have access to the complete Transport Stream
- Two DVB-ASI output ports for monitoring the receiver output for each channel
- ASI ports can also be used as independent general-purpose ASI outputs
- Each channel provides reception status, RF level, demodulation status, constellation, MER and pre-RS BER
- Free Windows and Linux SDK (DTAPI) is compatible with other DekTec adapters
- PCI Express x1



## APPLICATIONS

- Monitoring of cable networks
- Professional cable receiver

## KEY ATTRIBUTES

Parameter		Value
RF input connector		2x 75-Ω "F" female
ASI output connector		2x 75-Ω BNC
Input return loss		>10dB
Tuning range		54 .. 1002MHz
Input sensitivity		-60 .. -30dBm
Symbol rate		5.0 .. 7.1MBd
Metrology	RF level	-60 .. -30dBm
	MER	12 .. 38dB
	BER	Pre-Reed Solomon
	Constellation	2D
PCI-Express label		PCIe x1

## MODULATION STANDARDS

Modulation	Standard
DVB-C*	EN 300 429
QAM-B	J.83 Annex B
QAM-C	J.83 Annex C

\* QAM-128 is not supported

## ORDERING INFORMATION

Type	Description
DTA-2136-SDP	Dual QAM receiver with <i>DiTV</i> , <i>StreamXpress</i> and <i>DiGrabber+</i>
DTA-2136-SXP	DTA-2136-DP bundled with <i>StreamXpert</i> TS Analyser
DTA-2136-X8	DTA-2136 with 8 Xpect points (2x MPTS)

Please refer to [www.dektec.com](http://www.dektec.com) for the latest pricing and a list of distributors and resellers.